

# SHRI SIDDHAROODA DESIGN

THE CAD EXPERTS



Engineering Services offered:

**CAD/CAM/CAE & Manufacturing support**



**ESTEEMED CUSTOMERS TO WHOM WE  
HAVE SUPPORTED TILL NOW**



## ESTEEMED CUSTOMERS AND DOMAINS WHOM WE HAVE SUPPORTED TILL NOW

### CENTRAL GOVT

ISRO

ICHR

INDIAN  
RAILWAYS

BSNL

BHEL

### OEM

BOSCH

DO ALL  
ENGG

POWER  
TECH

DASH  
HYDRAULICS

PRECISION  
ENGINEERING

ROYAL NAG  
AVIATION

GAS TECH

### DOMAINS

AUTOMOTIVE

OIL & GAS

FOOD  
PROCESSING

AEROSPACE

NPD

REVERSE  
ENGINEERING

CIVIL

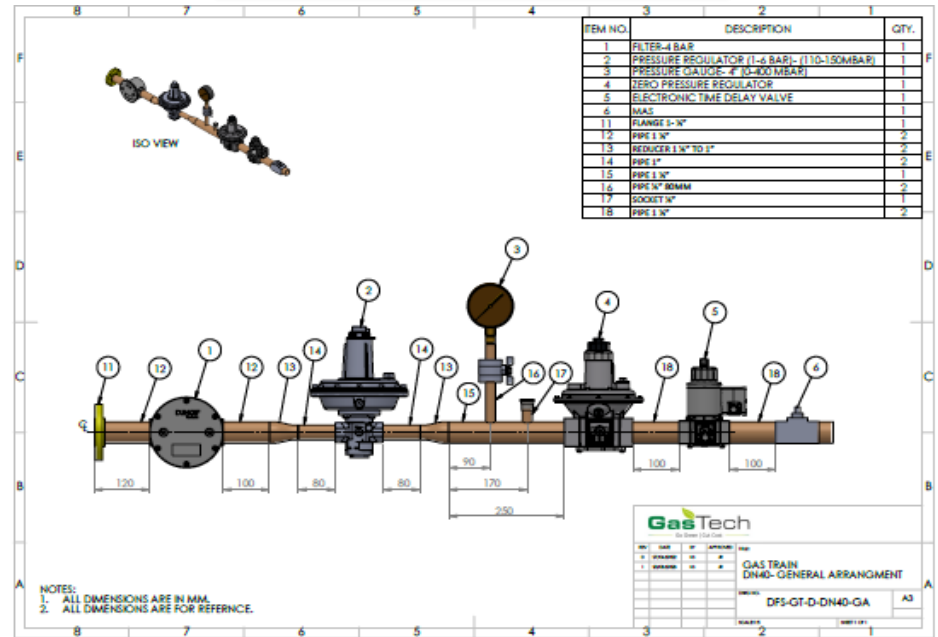
ELECTRONICS

EDUCATION

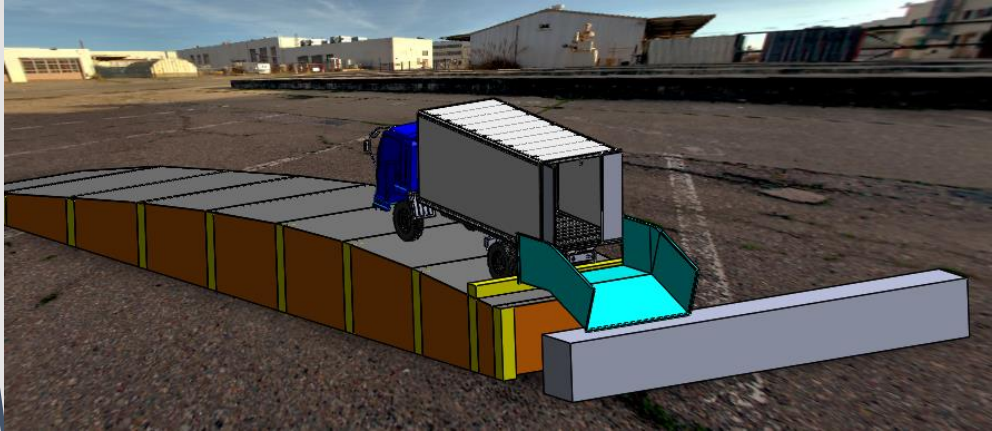


# CAD Capabilities



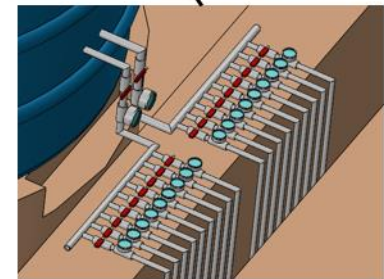
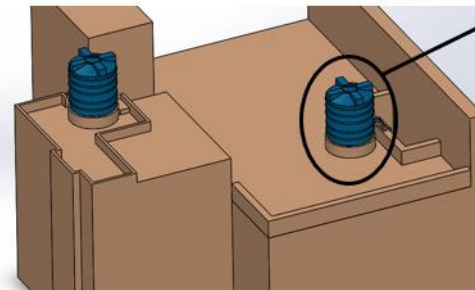
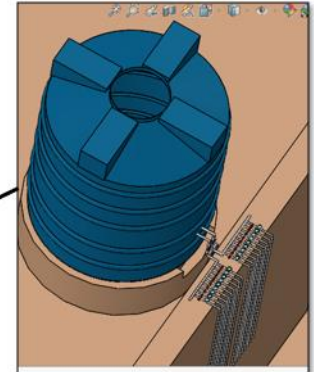


# CAD Capabilities

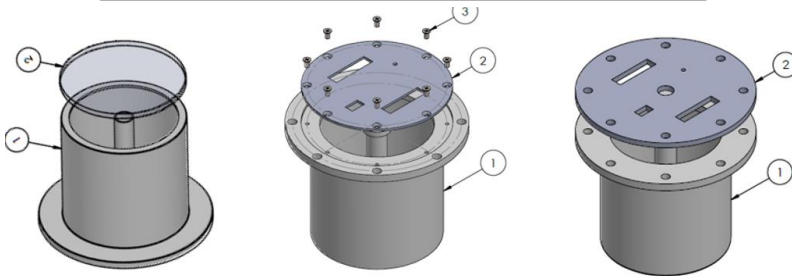


Concept design of Conveyor system  
for South African company

20,000 ltr Syntax Tank  
arrangement on terrace of  
18 floor high tower  
residential apartment



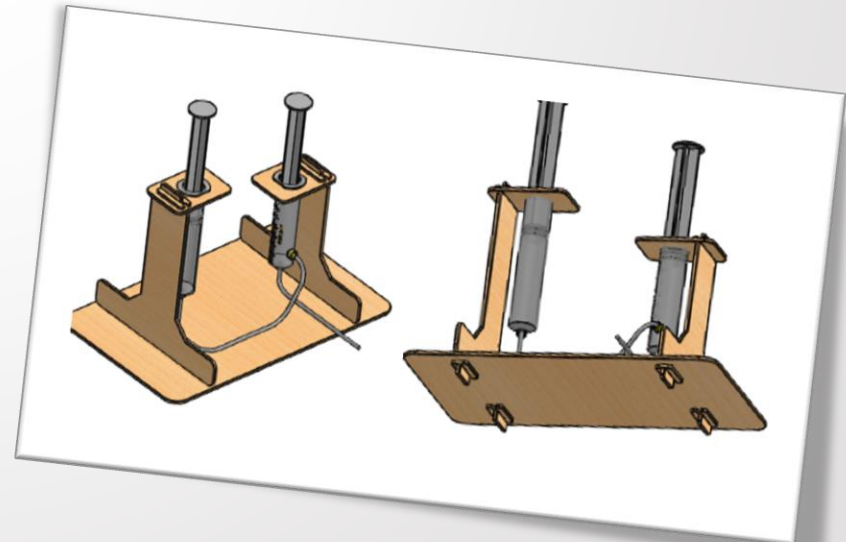
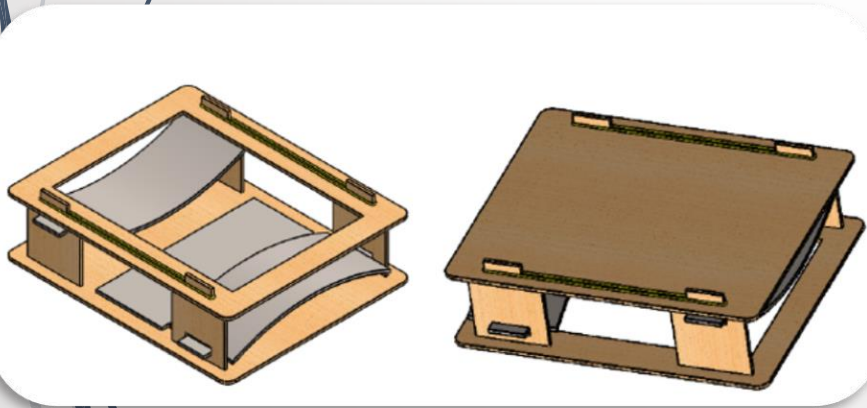
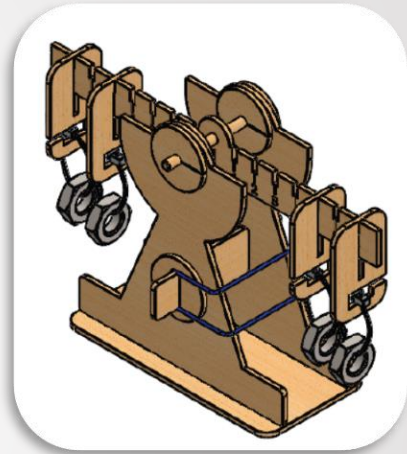
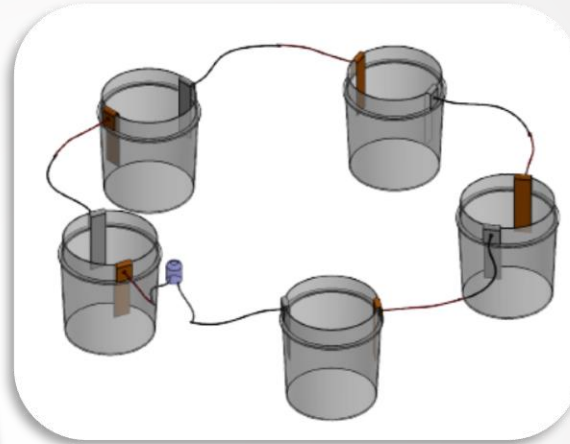
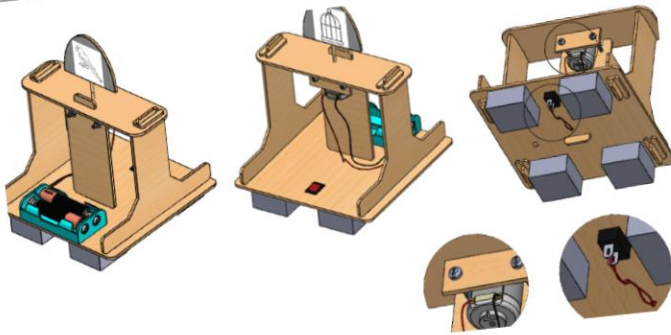
Testing fixture concept designs for a  
Electrical/Electronics Company



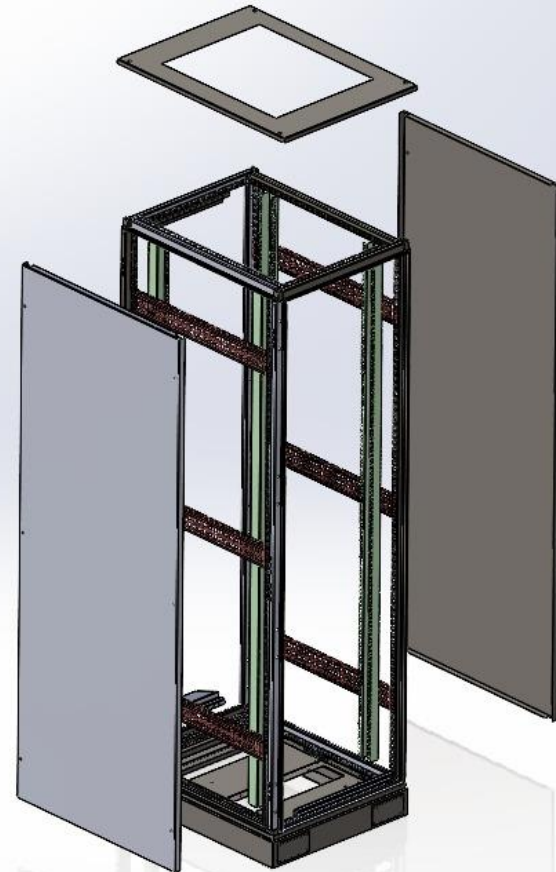
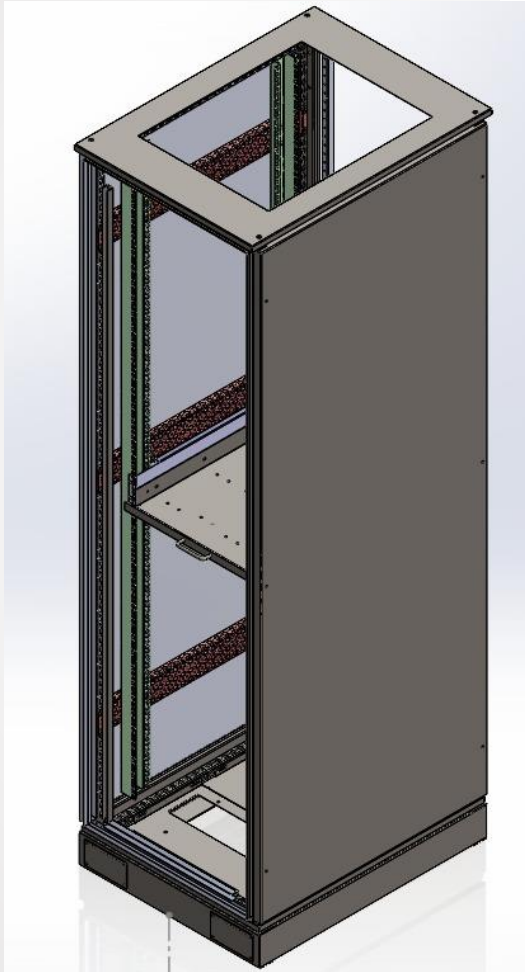


# CAD Capabilities

Science Project models created for sale in B2B websites

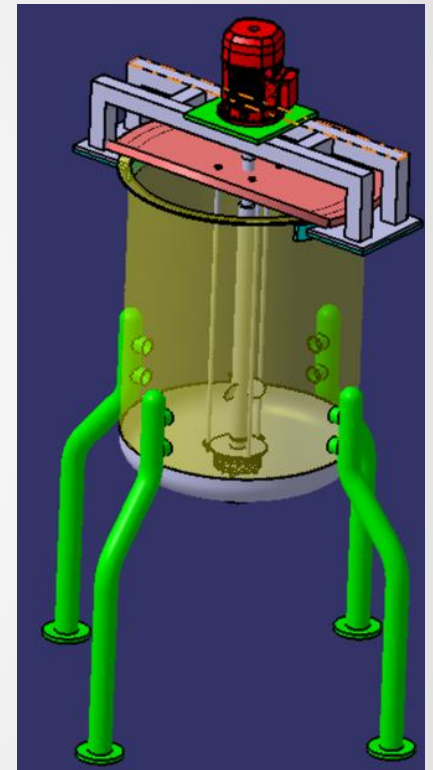
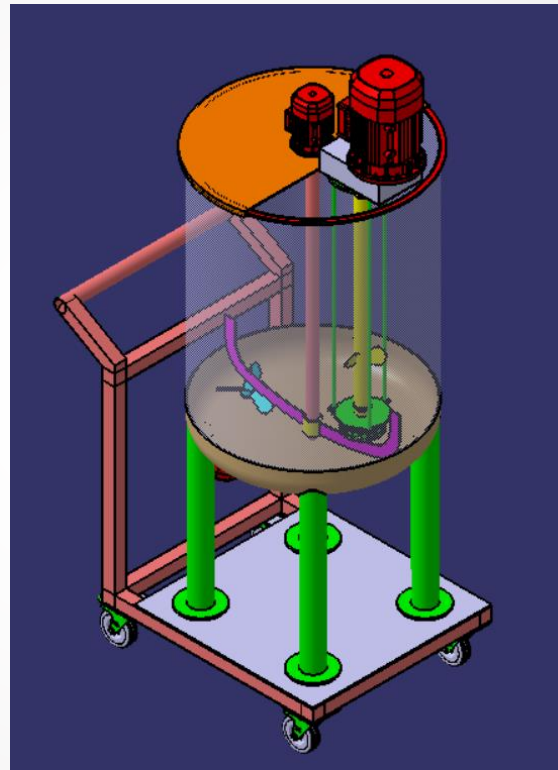
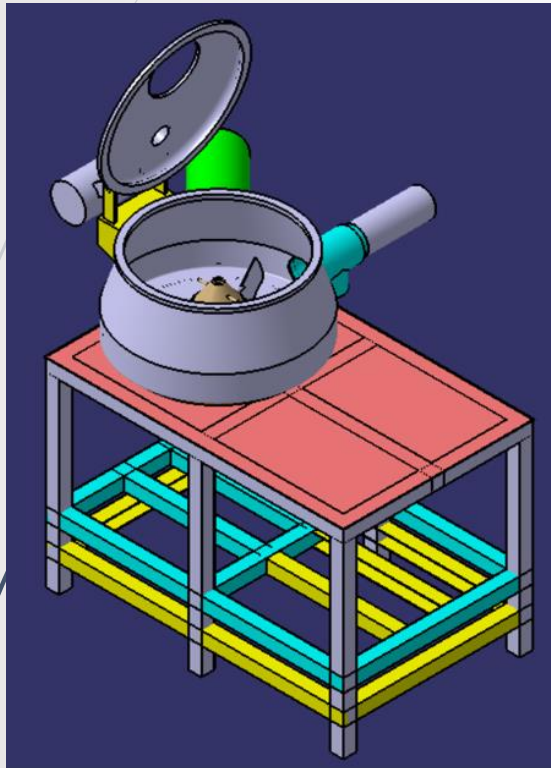


## SHEETMETAL CUSTOM SIZE PANEL DESIGN

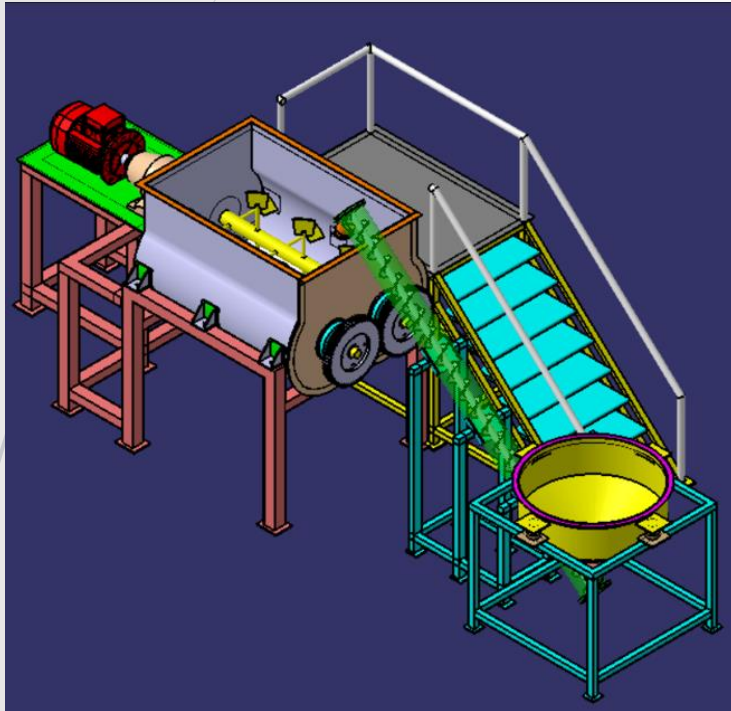




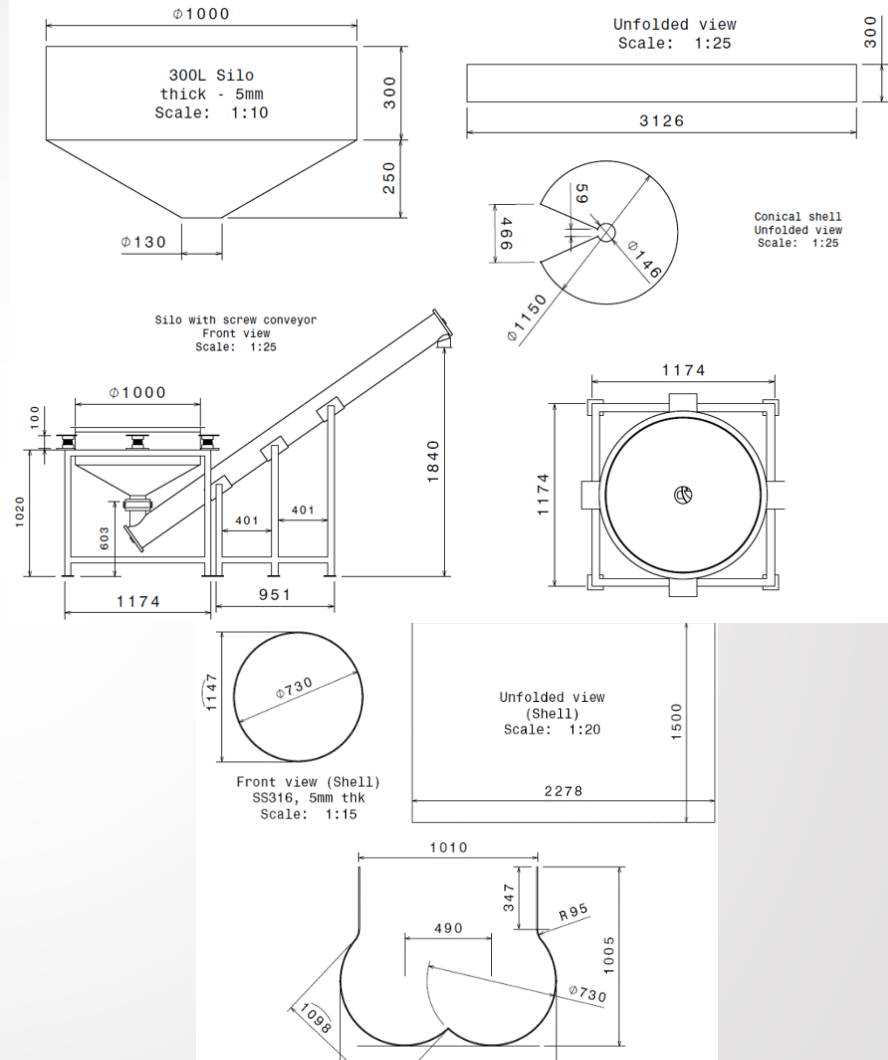
## SHEETMETAL EQUIPMENT DESIGN SAMPLES



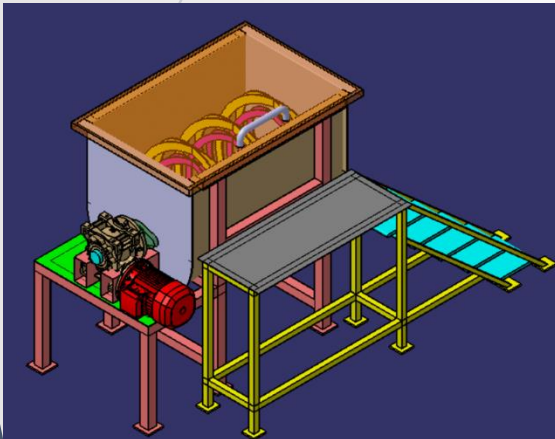
## ASSEMBLY



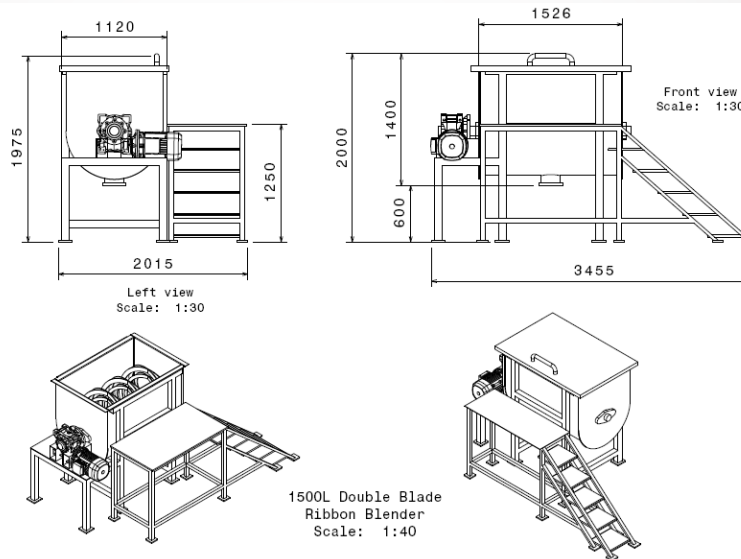
## DETAILING



## ASSEMBLY



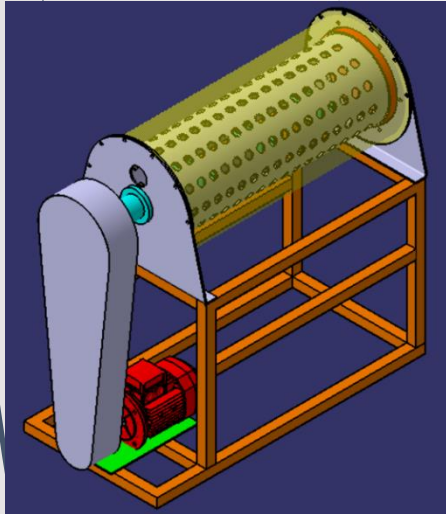
## DETAILING



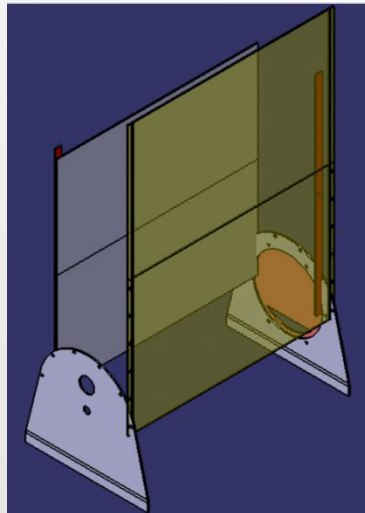
## EQUIPMENT MANUFACTURED



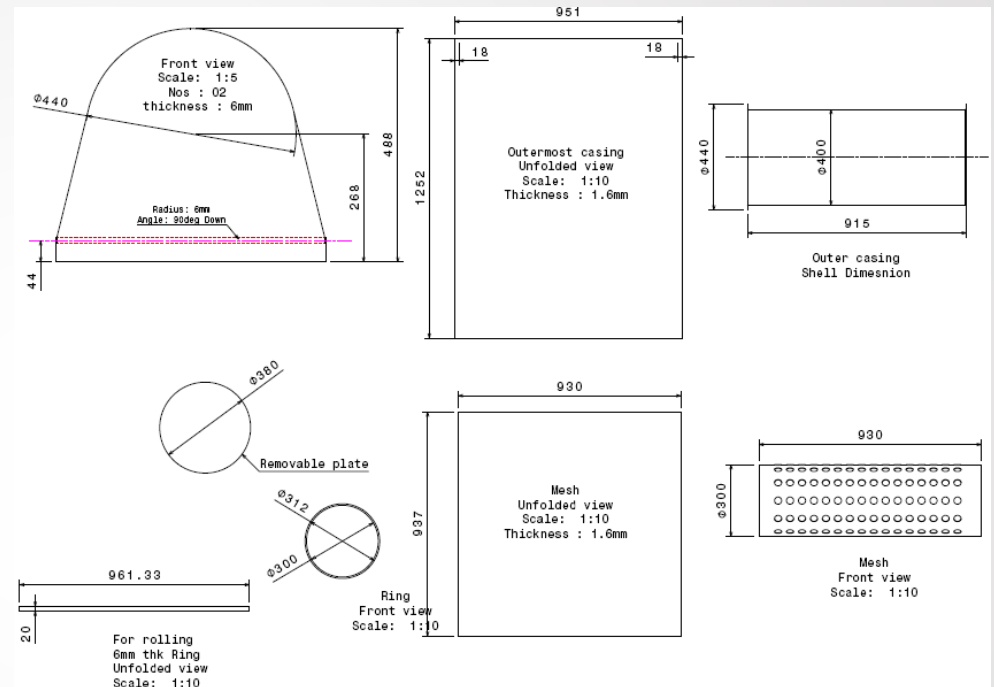
## ASSEMBLY



## UNFOLDED/FLATTERN

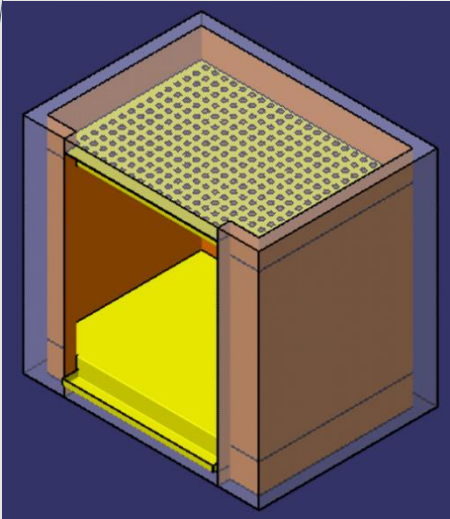


## DETAILING

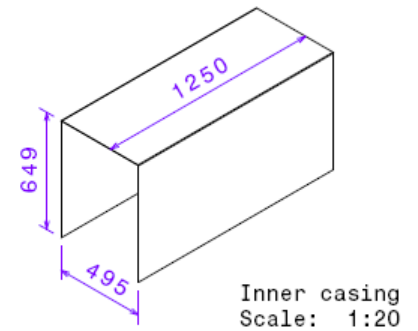
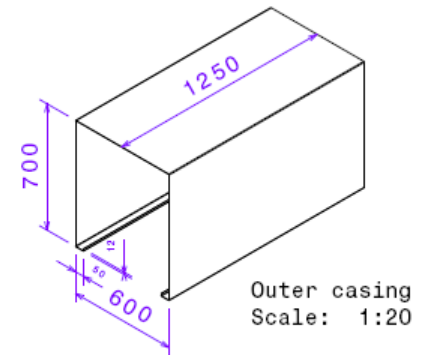
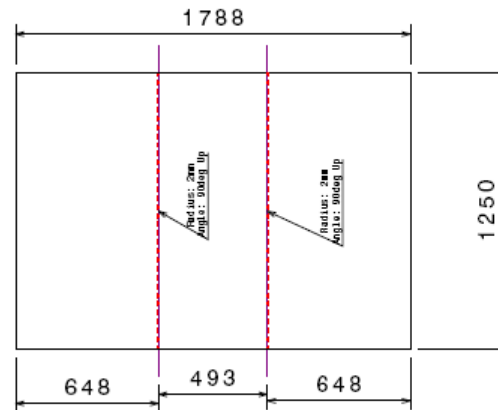
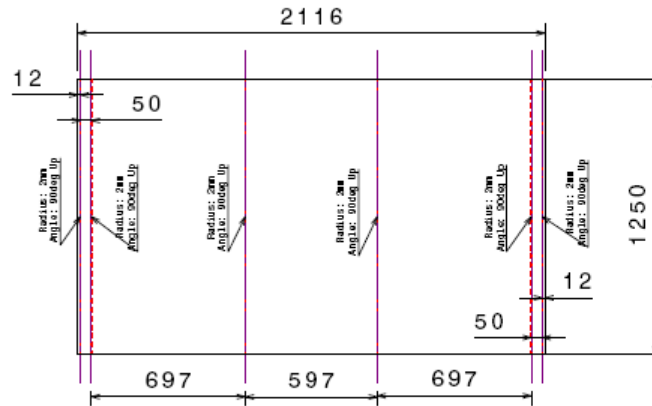
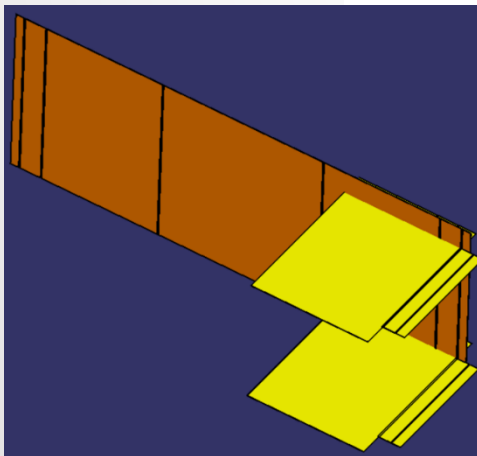


## DETAILING

### ASSEMBLY



### UNFOLDED/FLATTERN

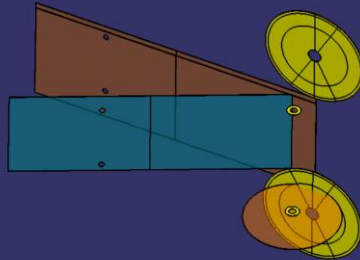




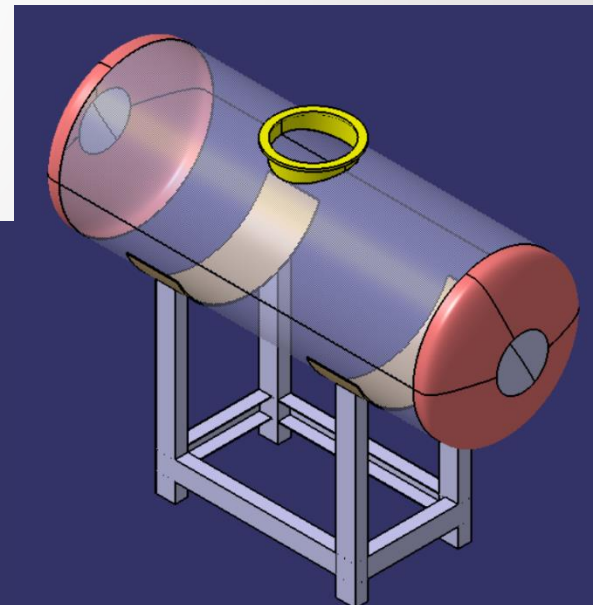
**ASSEMBLY**



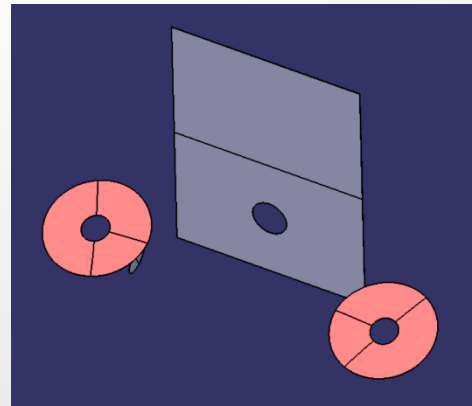
**UNFOLDED/FLATTERN**



**WELDMENT**

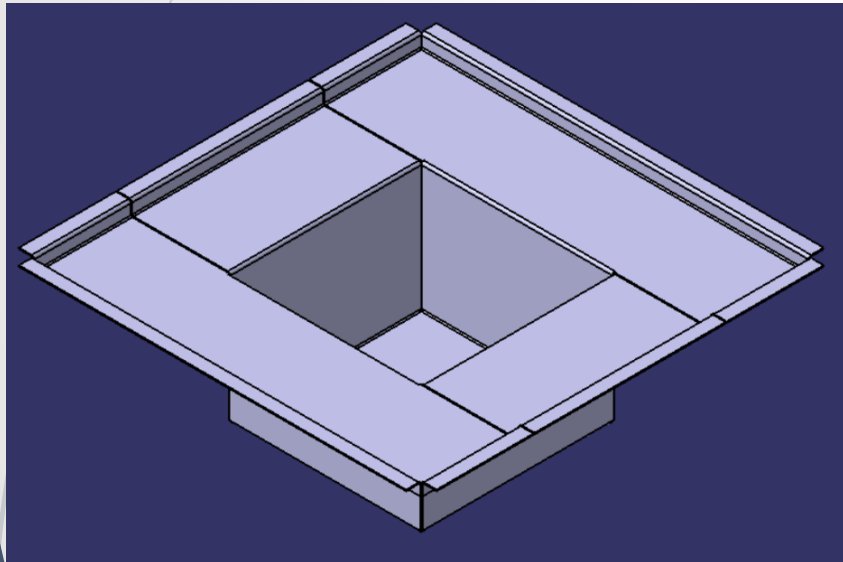


**UNFOLDED/FLATTERN**

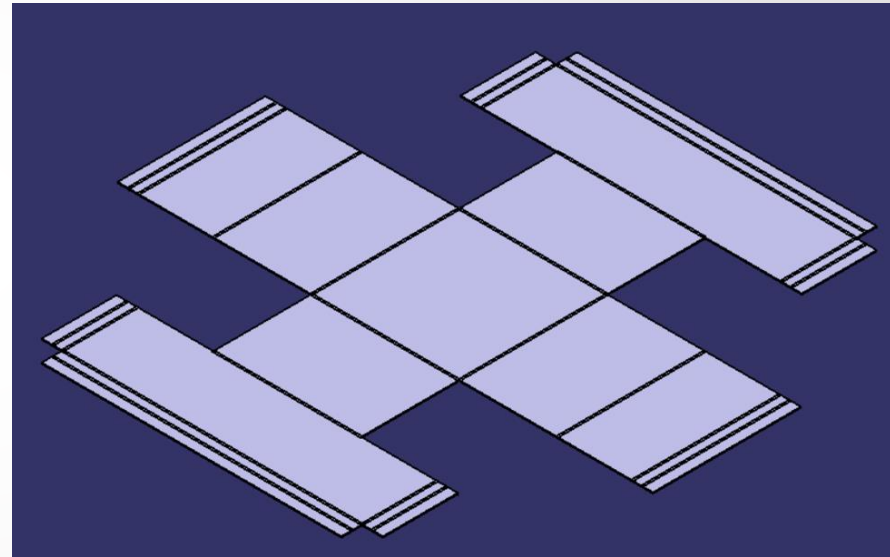




**PART**

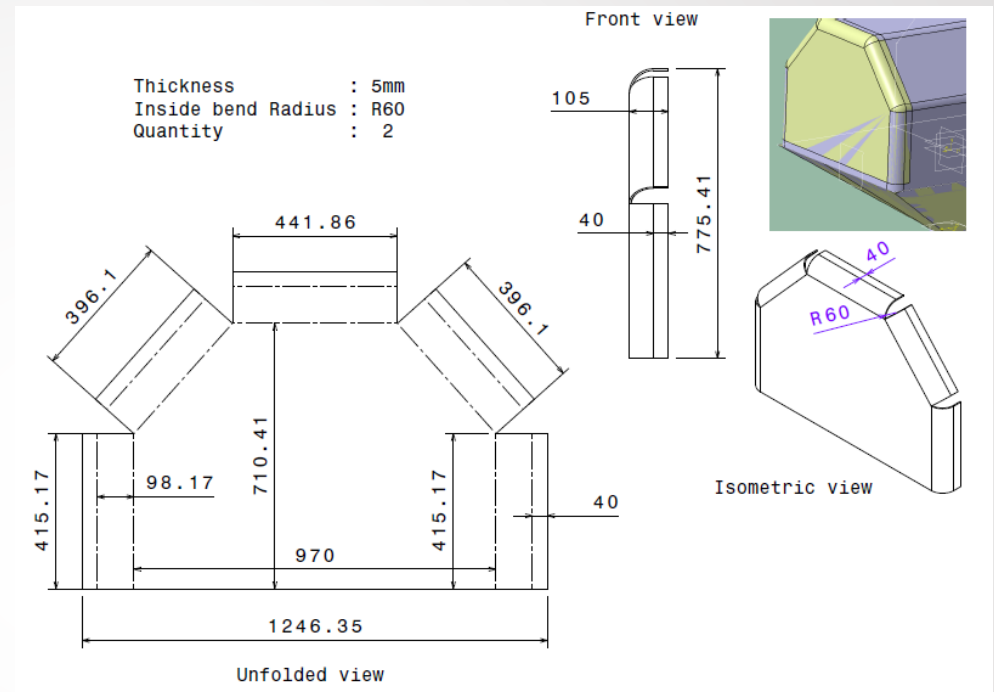
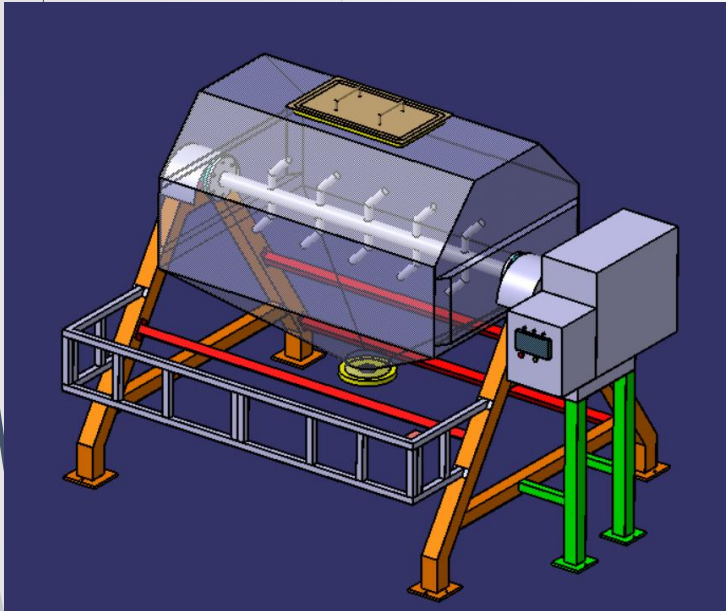


**UNFOLDED/FLATTERN**

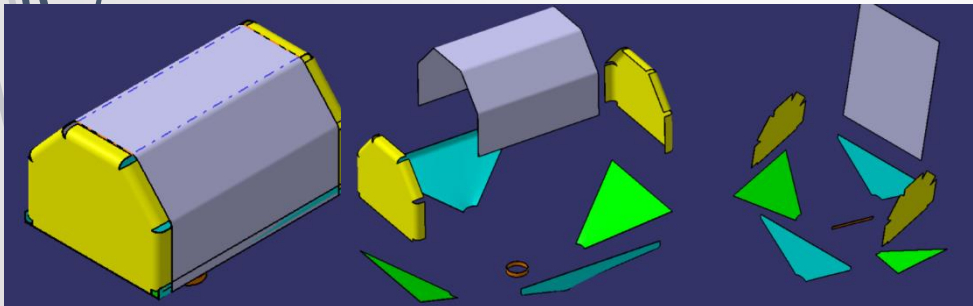


## DETAILING

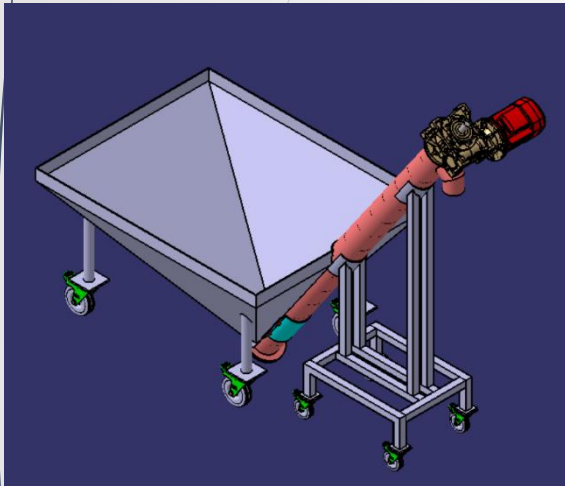
### ASSEMBLY



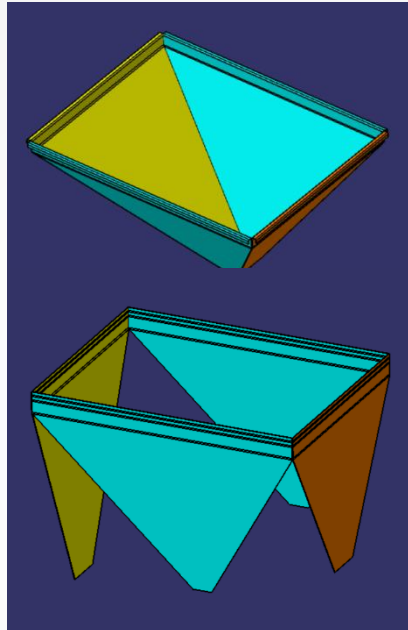
### UNFOLDED/FLATTERN



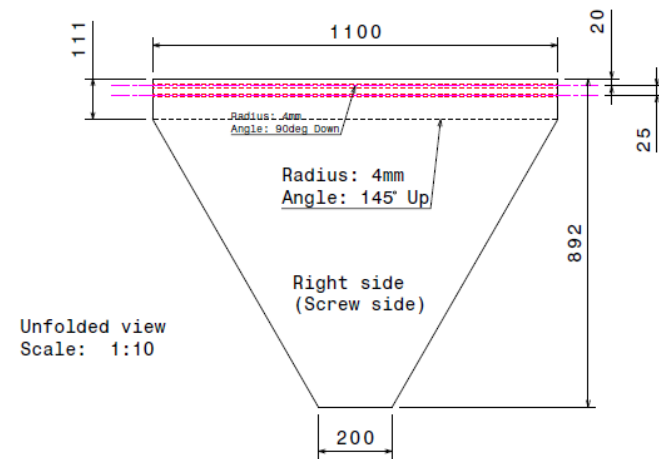
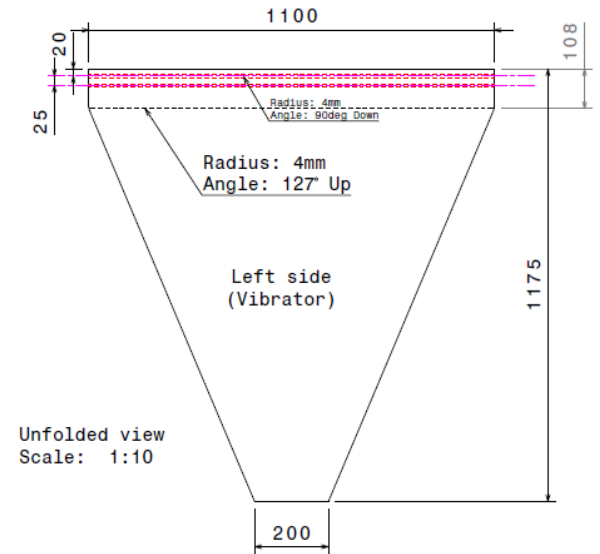
## ASSEMBLY



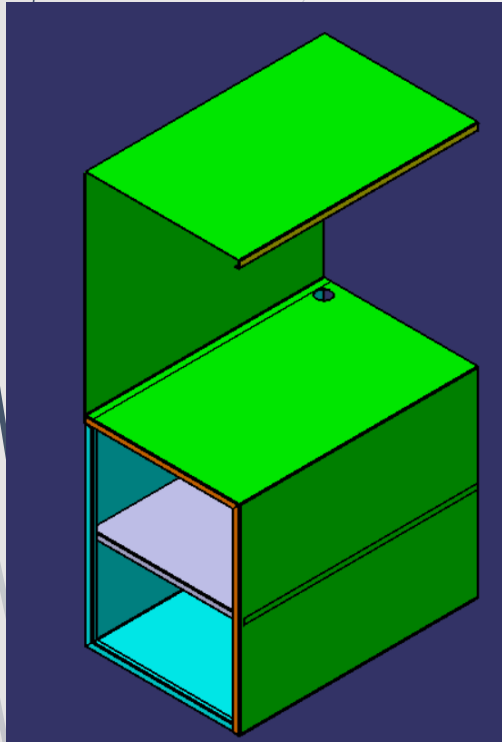
## UNFOLDED/FLATTERN



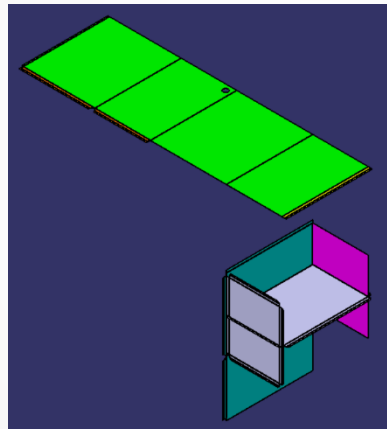
## DETAILING



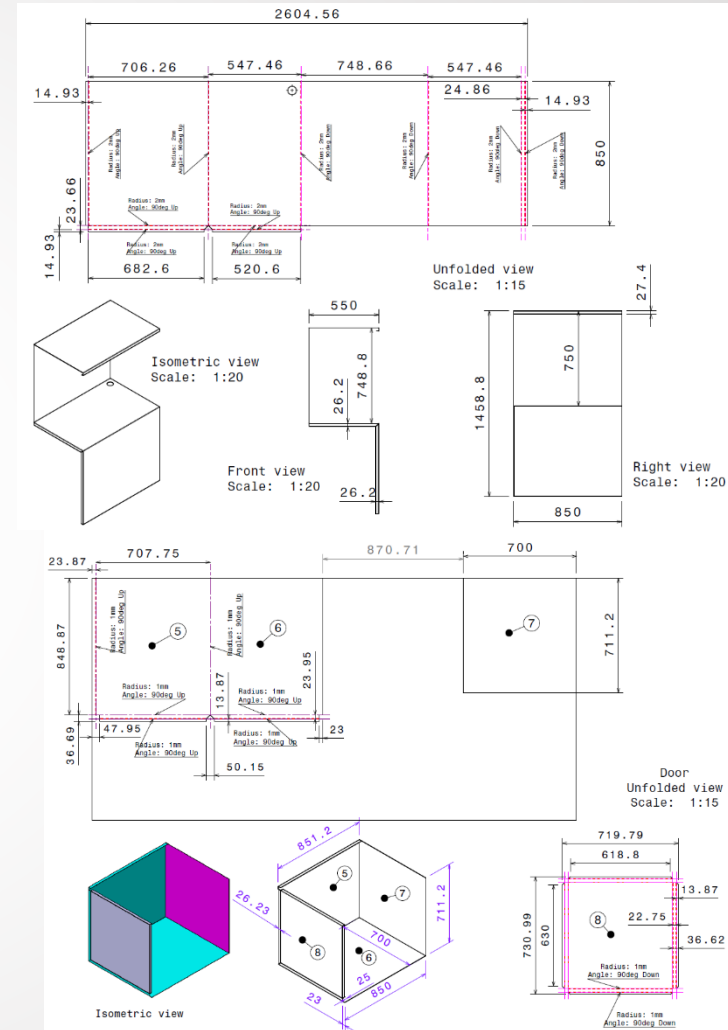
## ASSEMBLY



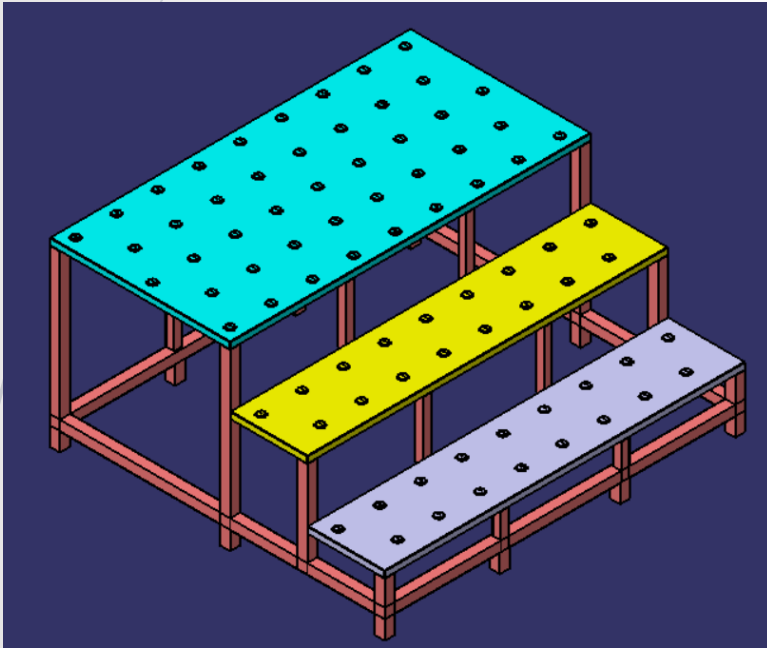
## UNFOLDED/FLATTERN



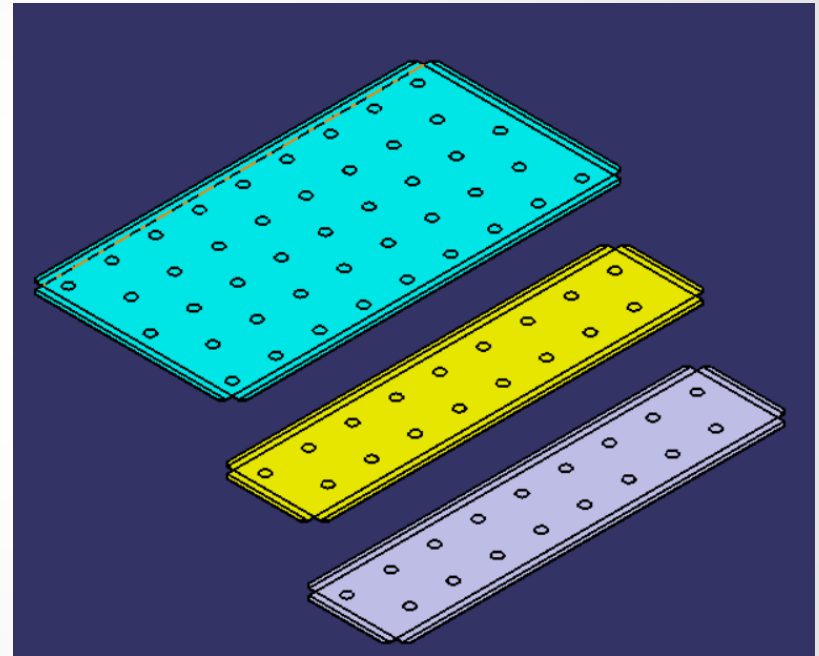
## DETAILING



**ASSEMBLY**



**PARTS**



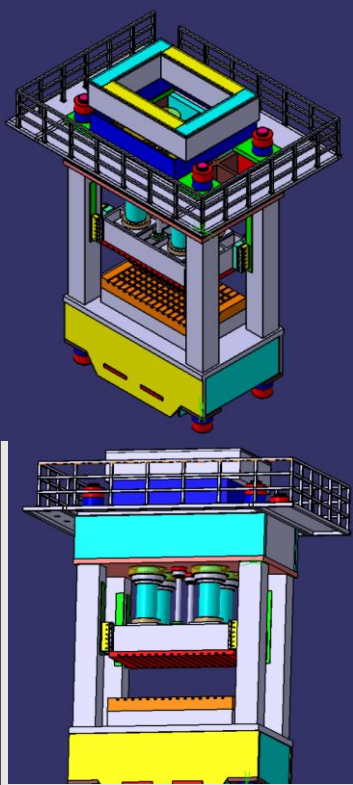
A decorative graphic on the left side of the slide. It features a solid blue arrow pointing to the right, with several thin, curved lines in shades of blue and grey extending upwards and outwards from its base.

# **NEW PRODUCT DESIGN (NPD) SAMPLES (WITH FEA)**



Hydraulic Press  
Machine Designed from  
scratch as per customer  
requirement and  
Industry standard  
specifications

Final Machine  
Manufactured after  
Ansys Validation



Same model being used to analyze  
under different load conditions

A	B	C	D
1 Static Structural	1 Static Structural	1 Static Structural	1 Static Structural
2 Engineering Data ✓	2 Engineering Data ✓	2 Engineering Data ✓	2 Engineering Data ✓
3 Geometry ✓	3 Geometry ✓	3 Geometry ✓	3 Geometry ✓
4 Model ✓	4 Model ✓	4 Model ✓	4 Model ✓
5 Setup ✓	5 Setup ✓	5 Setup ✓	5 Setup ✓
6 Solution ✓	6 Solution ✓	6 Solution ✓	6 Solution ✓
7 Results ✓	7 Results ✓	7 Results ✓	7 Results ✓
1600T (2500*1500)	1600T (1500*1500)	1300T (2500*1500)	1300T (1500*1500)

Analysis to check **Deflection, Deformation and Stresses** generated on the moving bed and Tie Rod at various Loads

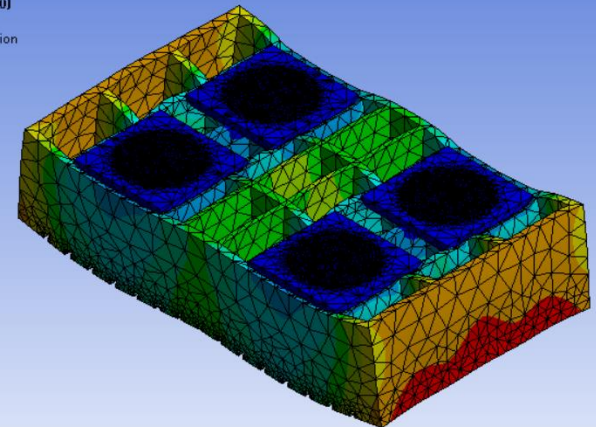
**A: Tie Rod Assembly Analysis**  
Total Deformation  
Type: Total Deformation  
Unit: mm  
Time: 1  
05-03-2024 18:37

0.74747 Max  
0.66442  
0.58137  
0.49801  
0.41526  
0.33221  
0.24916  
0.1661  
0.083052  
0 Min



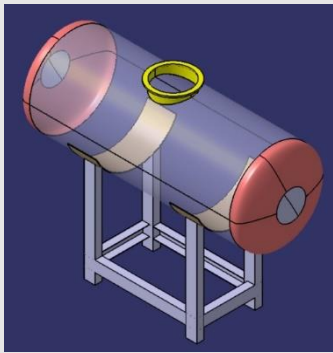
**A: 1600T (2500\*1500)**  
Total Deformation  
Type: Total Deformation  
Unit: mm  
Time: 1  
05-03-2024 18:26

0.13875 Max  
0.12333  
0.10791  
0.092497  
0.077081  
0.061665  
0.046249  
0.030832  
0.015416  
0 Min



## Input

Silos designed from scratch as per customer requirement for storage of edible oil



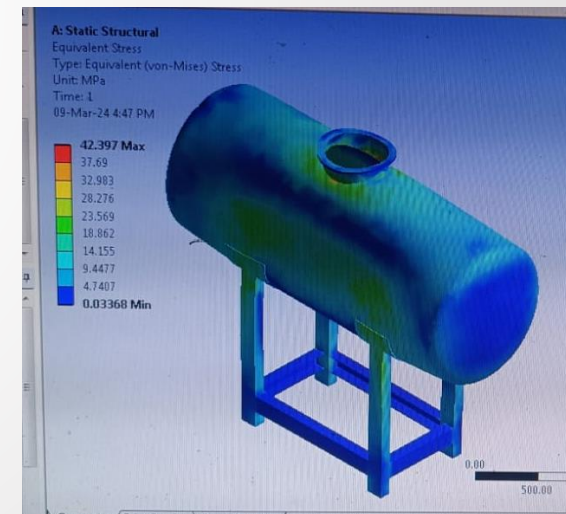
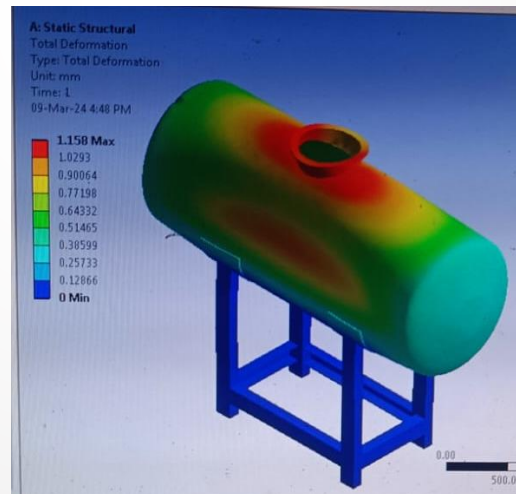
## Output

Final Machine  
Manufactured after  
Ansys Validation



## Analysis

Analysis to check **Deformation and Stresses** generated on the Container



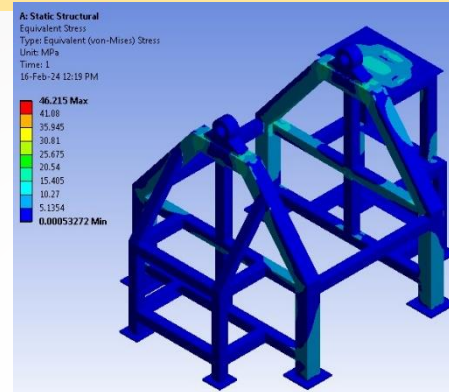
## Input

Double-cone blender designed from scratch as per customer requirement

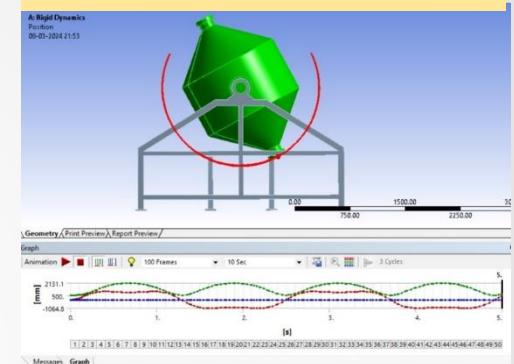


## Analysis

Analysis to check **Deformation and Stresses** of the structure

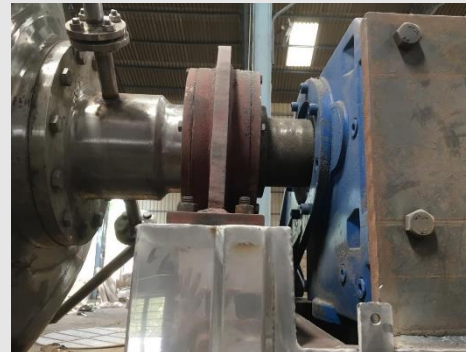


Torque Analysis to check 360 degree rotation of the blender



## Output

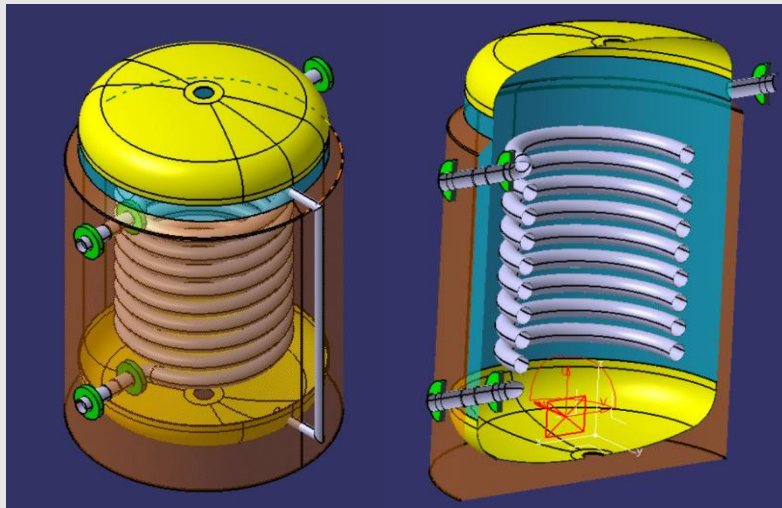
Double-cone blender **Manufactured after Ansys Validation**





# Input

Jacketed steam heating tank Designed from scratch as per customer requirement



Absolute pressure	Boiling point	Specific volume (steam)	Density (water)	Specific enthalpy of liquid water (sensible heat)	Specific enthalpy of steam (total heat)	Latent heat of vaporization	Specific heat	Dynamic viscosity
bar	°C	m³/kg	kg/m³	kJ/kg	kJ/kg	kJ/kg	kJ/kg.K	kg/m.s
0.02	17.51	67.006	0.015	71.45	2833.64	606.18	2460.18	587.67
0.03	24.10	49.667	0.020	101.06	2774.54	608.92	2444.09	593.69
0.04	28.98	34.802	0.029	121.41	2700.51	610.13	2423.10	597.74
0.05	32.80	28.184	0.036	137.77	2621.58	611.81	2403.81	601.63
0.06	36.16	23.741	0.042	151.50	2567.51	613.24	2386.01	605.08
0.07	39.02	20.511	0.049	163.38	2527.62	614.46	2369.24	608.09
0.08	41.53	18.100	0.055	173.87	2497.11	615.53	2354.26	610.71
0.09	43.79	16.204	0.062	183.26	2471.14	616.46	2340.85	613.02
0.1	45.83	14.676	0.068	191.84	2448.78	617.36	2328.94	615.08
0.2	60.06	7.650	0.131	251.46	2050.86	623.35	2155.40	567.30
0.3	69.13	5.229	0.191	286.31	1762.43	627.97	2106.13	537.97
0.4	75.89	3.993	0.250	317.65	1546.88	629.61	2119.23	523.94
0.5	81.35	3.240	0.308	348.97	1384.98	631.98	2146.97	510.44
0.6	85.95	2.732	0.366	369.93	1251.57	633.79	2190.64	507.63
0.7	89.86	2.365	0.423	379.77	1140.07	635.35	2243.72	505.39
0.8	93.51	2.087	0.479	384.73	1045.77	636.73	2274.05	503.78
0.9	96.71	1.869	0.536	406.21	967.65	637.82	2296.86	501.74
1	99.83	1.694	0.590	417.51	897.73	638.92	2317.92	500.30
1.1	102.35	1.549	0.645	426.84	834.21	640.01	2337.76	500.01
1.2	104.81	1.428	0.700	439.39	784.94	640.93	2354.99	500.02
1.3	107.13	1.326	0.756	450.18	746.08	641.77	2370.79	500.06
1.4	109.33	1.238	0.809	458.42	714.49	642.56	2385.18	500.07
1.5	111.37	1.160	0.860	465.13	688.35	643.30	2398.33	500.08
1.6	113.27	1.100	0.909	470.36	666.25	643.99	2410.45	500.09
1.7	115.17	1.051	0.957	475.22	646.97	644.64	2421.75	500.09
1.8	116.93	1.007	1.004	479.70	629.87	645.26	2432.32	500.10
1.9	118.62	0.969	1.050	483.86	614.51	645.83	2442.31	500.10
2	120.23	0.936	1.095	487.71	600.59	646.39	2451.80	500.11
2.2	123.27	0.810	1.239	517.63	573.63	647.42	2482.99	500.12
2.4	126.96	0.708	1.408	536.81	546.86	648.36	2514.81	500.13
2.6	129.97	0.626	1.594	548.88	520.79	649.35	2547.39	500.13
2.8	131.20	0.568	1.746	551.45	501.54	650.03	2579.08	500.13
3	133.54	0.509	1.965	551.44	484.62	650.77	2610.22	500.14
3.2	136.87	0.454	2.203	554.28	469.55	651.48	2640.85	500.14
3.4	140.03	0.402	2.483	555.88	455.83	652.17	2670.98	500.15
3.6	143.02	0.359	2.785	556.88	443.21	652.84	2700.61	500.15
3.8	145.87	0.324	3.085	557.44	431.54	653.49	2729.75	500.15
4	148.50	0.295	3.385	557.68	420.79	654.12	2758.40	500.16
4.5	151.85	0.275	3.686	557.82	410.92	654.74	2786.54	500.16

# Output

Final Machine Manufactured images

